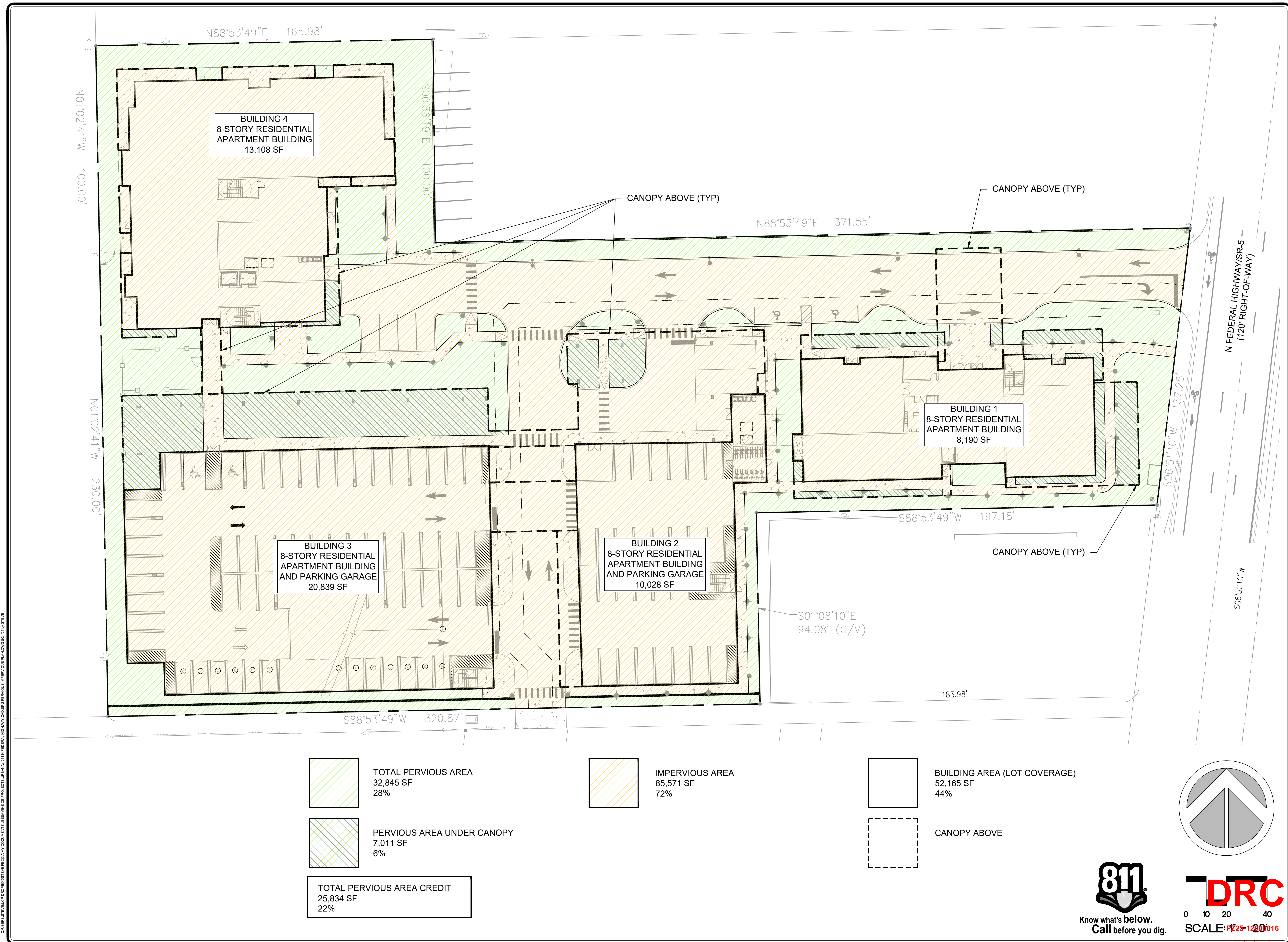


THE SATORI AT LIGHTHOUSE POINT
4211 N FEDERAL HIGHWAY
POMPANO BEACH, FL

Sheet Title	PERVIOUS IMPERVIOUS PLAN
Revision Dates	
Date	08/25/2025
Sheet Number	SP-2
Seal	

STEPHEN M. PECCIA, P.L.A.
LA 6667289



C:\BENTLEY\PLT\PROJECTS\THE SATORI AT LIGHTHOUSE POINT\DWG\SP-2 PERVIOUS IMPERVIOUS PLAN.DWG 08/25/2025 BY STEVE